

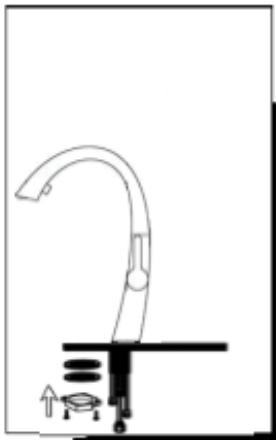
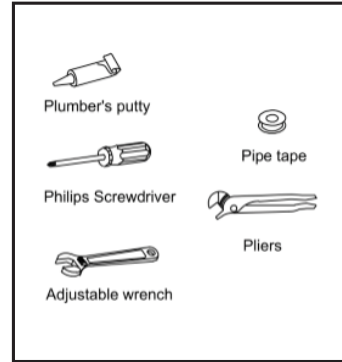
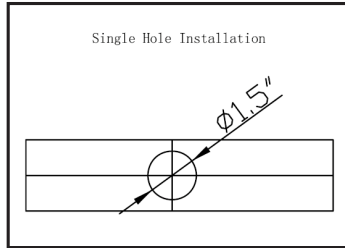


DSF-16KPO00

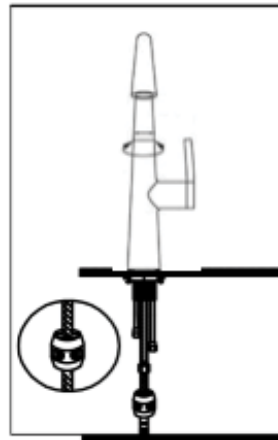
INSTALLATION INSTRUCTIONS



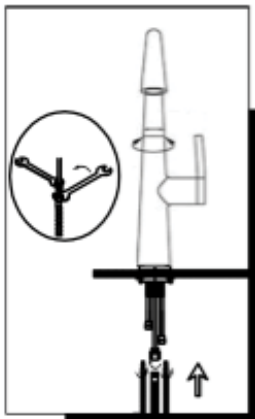
Tools You Will Need:



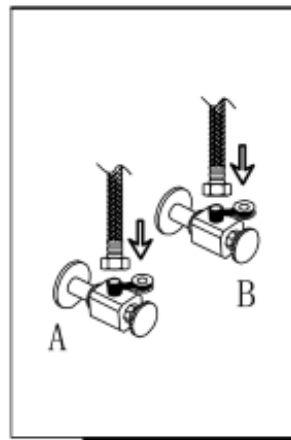
1. Insert faucet through center hole, assembly washer & metal washer, onto faucet and tighten with lock nut.



2. Proper installation of the hose weight kit will ensure that the spray handle retracts smoothly. On the spray side of the hose, measure 15" down from the body of the faucet and install the hose weight kit at this point. Pull out on the spray head. It should move easily and retract smoothly. Reposition the hose weight kit as necessary. Make sure that the hot and cold supply hoses do not interfere with the spray hose. They can be repositioned slightly if necessary.



3. Screw and tighten the flexible hoses to the faucet. Do not allow the water supply brass tube to twist.



4. Attach two flexible hoses to water supply.